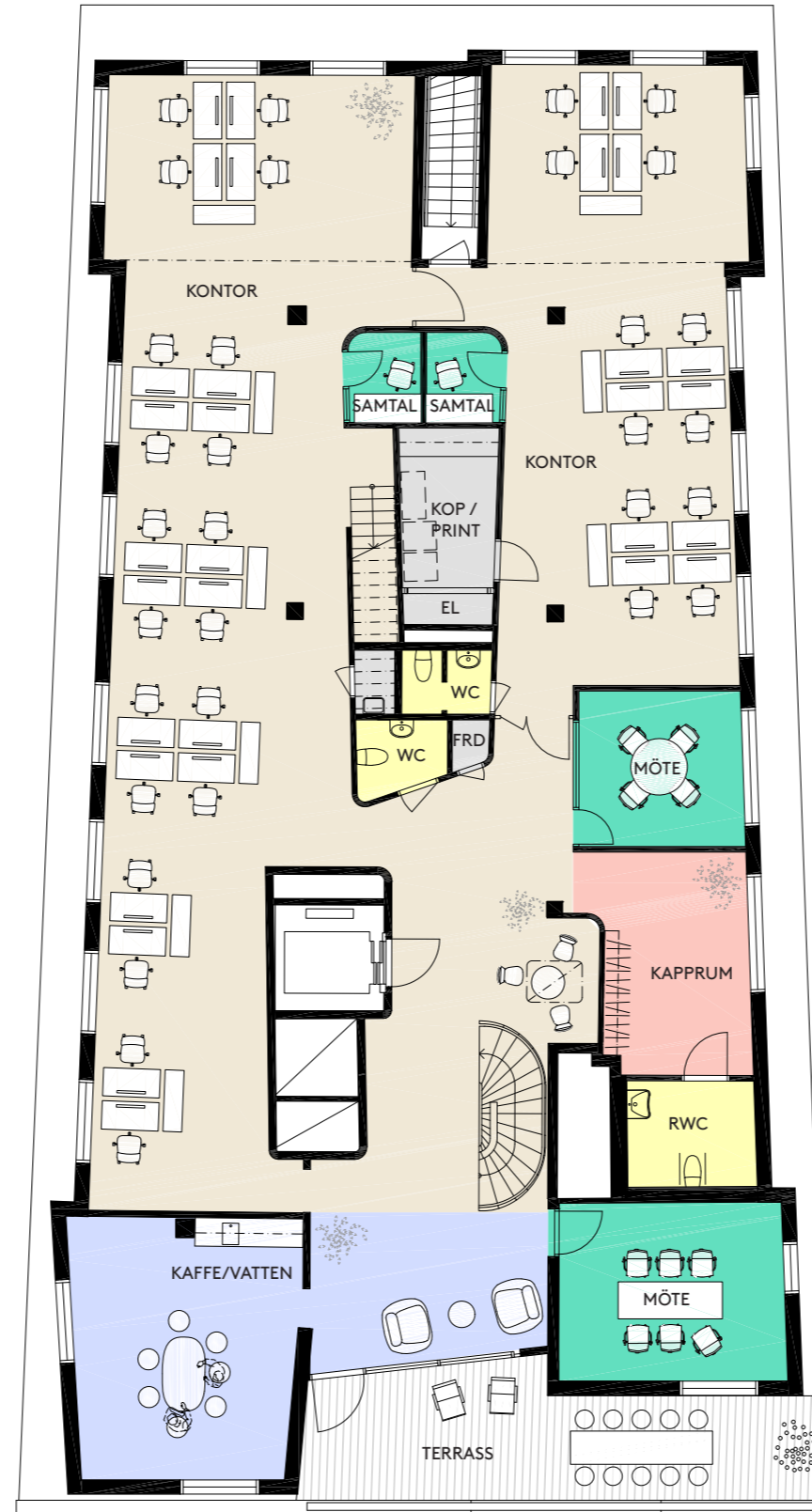


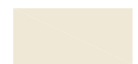


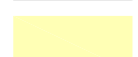
//Erskine & friends

Adress: Warfvinges väg 26
Fastighetsbeteckning: Kv. Gladorna
Plan: 6
Yta: ca 359 kvm
Lokaltyp: Kontor

32 arbetsplatser / 11 kvm per arbetsplats

| | |
|----------------------------|----|
| Arbetsplatser i storkontor | 32 |
| Mötesrum | 2 |
| Samtalsrum | 2 |
| Förråd/ Kopiering/ Print | 2 |
| EI/IT | 1 |
| Pentry | 1 |
| Wc | 3 |
| Städ | 1 |



-  Kontorsyta
-  Möte/ Konferens/ Samtal
-  Kök/ pentry /paus
-  Allmänna utrymmen
-  Förråd/ teknik
-  WC/ RWC/ Städ/ Dusch

