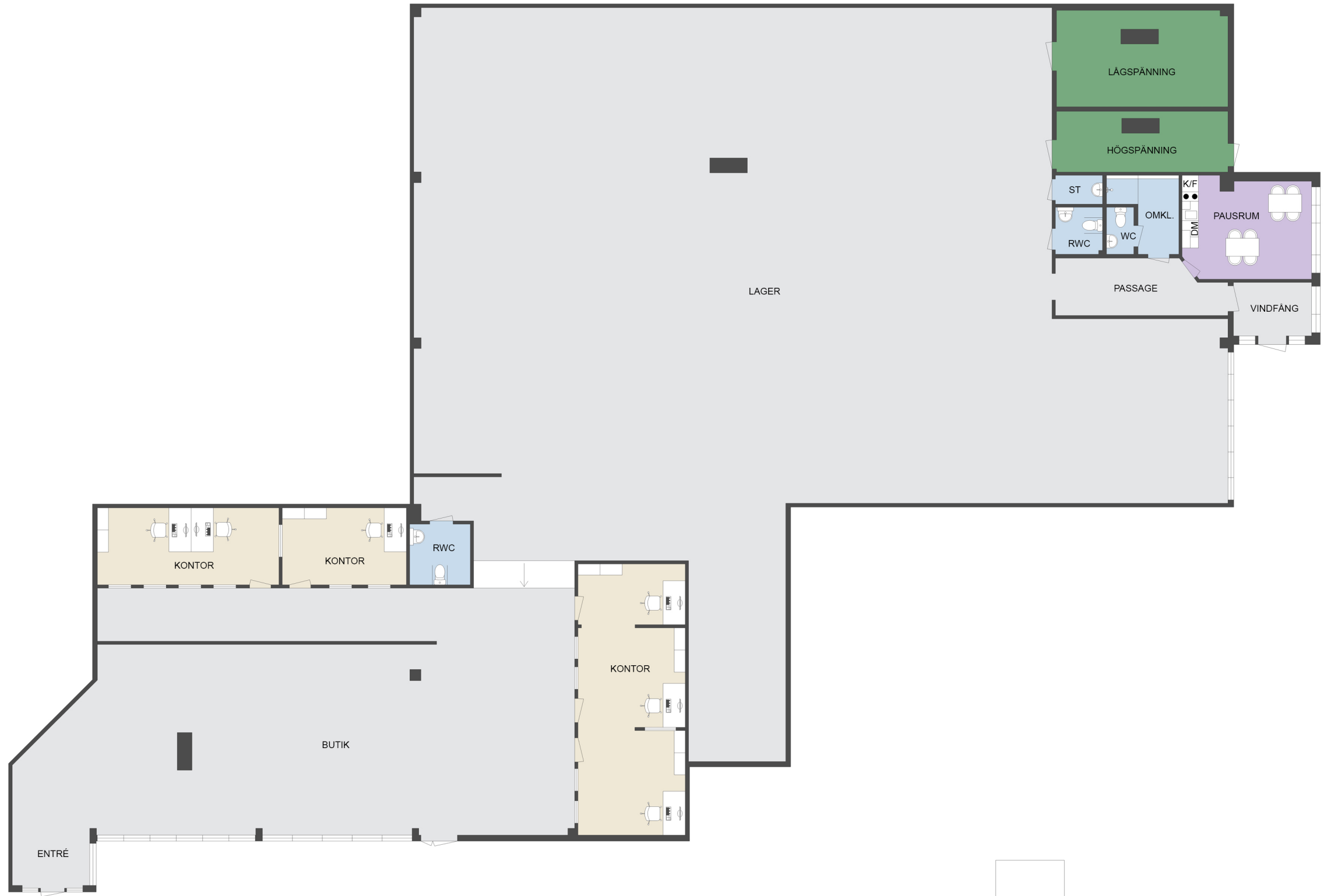



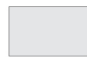


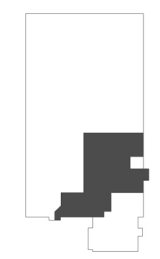


Adress: Adolfsbergsvägen 6  
 Fastighetsbeteckning: Kv. Lifografen 1  
 Plan: Bottenplan  
 Yta: 808 m<sup>2</sup>  
 Lokaltyp: Butik (Showroom)



-  Kontorsyta
-  Möte/Konferens/Samtal
-  Pentry
-  Allmäna ytor
-  WC/RWC/Städ/Dusch
-  Förråd/Teknik



Med reservation för avvikelser.  
 Möbleringen är endast ett förslag och  
 kanske inte är genomförbar i verkligheten.